

Better Care Fund 2015/16: Update to HASC

24th November 2015

Buckinghamshire.....*better together*

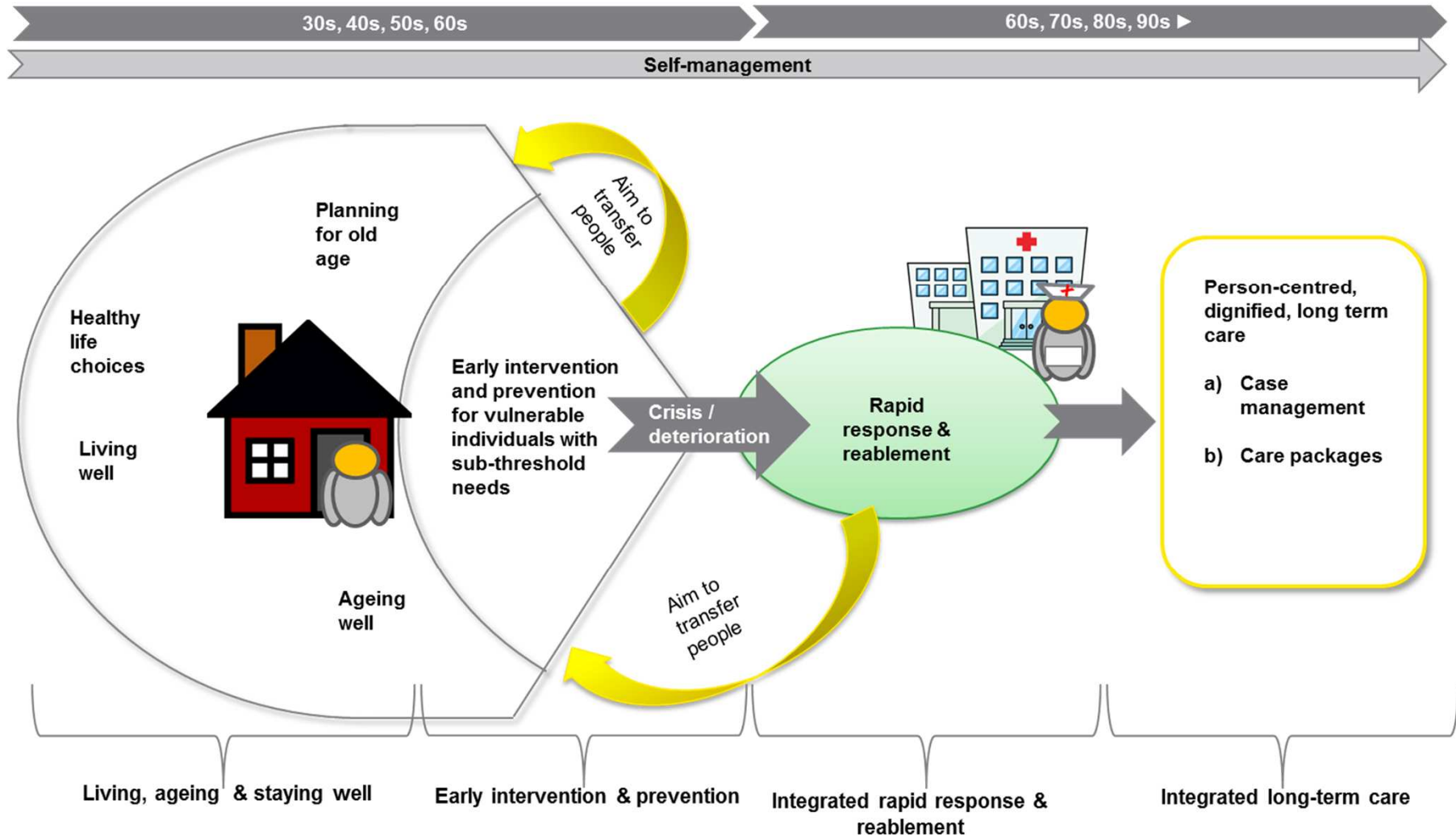
Background and Context

- National mandate to join up health and social care commissioning budgets
- Aim to support delivery of person centred care
- Also expected to contribute to reduction in acute admissions to hospital
- NO new money
- National focus on frail older people

Buckinghamshire's BCF

- Scoped the collective spend on frail older people - £100m
- Agreed to focus on reablement first
- National conditions relating protecting social care and carer services
- S75 pooled budget of £28.8m

Integration: the service model



Buckinghamshire's BCF

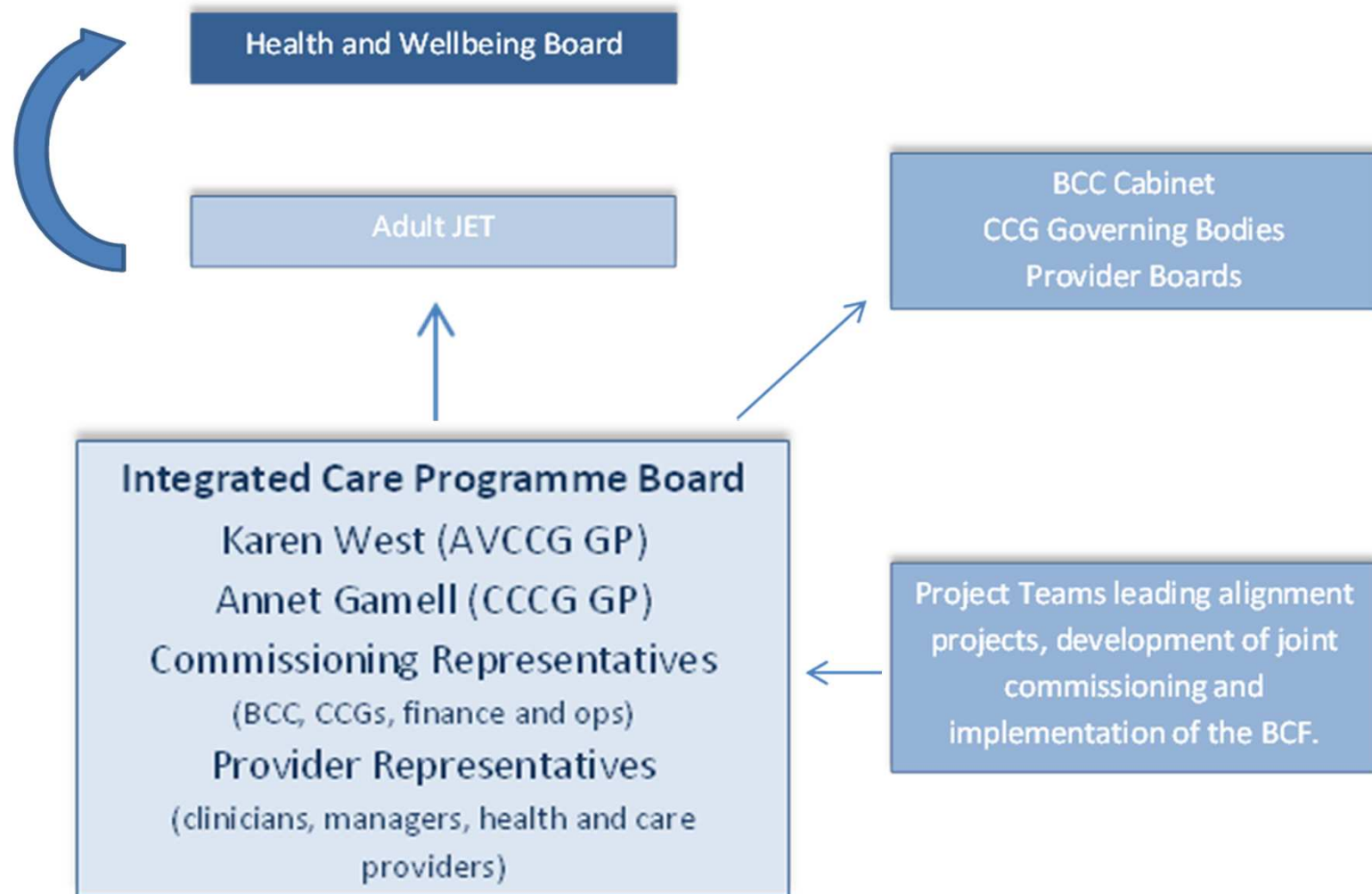
Service/Project	Value (£K)
Mental Health Advisors	156
7 Day Service	640
Falls Service (ASC & PH)	528
Stroke Advisors	140
Hospital Discharge Teams	791
Quality in Care Team	310
MAGs	90
Reablement	2172
Home from Hospital	222
Assistive Technology	306
Carers	550
Self funder support	395
Risk Reserve - placements	600
Risk Reserve – urgent care	739
Risk Reserve - other	21
ACHTs	13131
Community Hospitals	4205
OPAT services	59
DFG	1499
Social Care Capital Grant	931
Care Bill	1400
Total	28,855

Buckinghamshire.....*better together*

Governance

- Health & Wellbeing Board have oversight
- Adult JET is the partnership board for the s75
 - Amendments being made to current arrangements to provide greater clarity and focus
 - Adult JET members are health and social care commissioners
- Integrated Care Programme Board set up to discuss BCF and integration projects in more detail; reports to Adult JET

Governance



Buckinghamshire.....*better together*

Performance Management

- BCF has national measures which are whole system KPIs
 - Total non elective admissions reductions
 - Permanent admissions to care homes (ratio)
 - Delayed transfers of care
 - Reablement (at home >91 days)
- Currently not meeting the non elective and reablement targets
- Mitigating actions taken across the system

Buckinghamshire.....*better together*

Risk Management

- Risk registers developed by Integrated Care Programme Board:
 - Better Care Fund – the risks associated with a pooled budget across health and social care
 - Integration projects – the risks associated with pathways and service redesign
- Mitigation actions planned and taken by the Integrated Care Programme Board but also by the System Resilience Group in relation to non elective admissions
- Some risks remain high despite mitigation due to the complex nature of the nationally set relationships between health and social care:
 - Financial flows do not match activity flows
 - Failure to meet national targets
 - Lack of preparedness and capacity in all community services

Buckinghamshire.....*better together*

Service Improvements

- All services and projects funded from BCF existed previously
- In light of the Commissioning Strategy for Frail Older People (and Primary Care Strategy) some changes instigated:
 - BRAVO: single point of referral for health and social care reablement services
 - Live from April 15
 - Roll out during Summer 15 (including Wexham September 15)
 - Over 1000 referrals
 - Locality Teams concept in development through both CCGs
 - Care Home project to co-ordinate resources for these patients

Buckinghamshire.....*better together*

Next Year

- Confirmation from Ministers that the BCF will continue in 2016/17
- Minimum level expected will be known after the publication of the Comprehensive Spending Review (25th Nov)
- Health and social care commissioners will review at the Adult JET which services to include and any changes – sign off with HWWB before April 16